

SZ10 SZ15

STAIR PROFILE SZ10 - SZ15



APPLICATION:

SZ 10 is a profile that allows you to finish the edge of the stair coverings "stone carpet", with a layer thickness of 10 mm.

SZ 15 is a profile that allows you to finish the edge of the stair coverings "stone carpet", with a layer thickness of 15 mm. The unique design allows you to finish both edges of one profile between the tread and risers and the tread of the stairs and face. The transition between the edges is done by bending the profile, which provides high durability and aesthetic appearance. The openings allow moisture to be dissipated through the openings along the profile.

PROPERTIES:

- effective drainage of sheet piling
- resistance to corrosion and weathering
- tightness in the peripheral parts
- solution for quick and easy installation
- operating life of the staircase sheathing
- aesthetic appearance

BASE	aluminum coated polyester
WEIGHT	SZ10 200g/m; SZ15 210g/m
COAT THICKNESS	ca. 70 µm
COLOR	RAL 9006

SURFACE TYPE:

Concrete substrates, and other substrates that have sufficient rigidity and strength. The substrate must be stable, clean and free of dirt. Along the edge of the edge of the step is made a reduction, the width of the mounted profile (50 mm) and a depth of approx. 1.5 mm.

TOOLS:

Concrete substrates, and other substrates that have sufficient rigidity and strength. The substrate must be stable, clean and free of dirt. Along the edge of the edge of the step is made a reduction, the width of the mounted profile (50 mm) and a depth of approx. 1.5 mm.

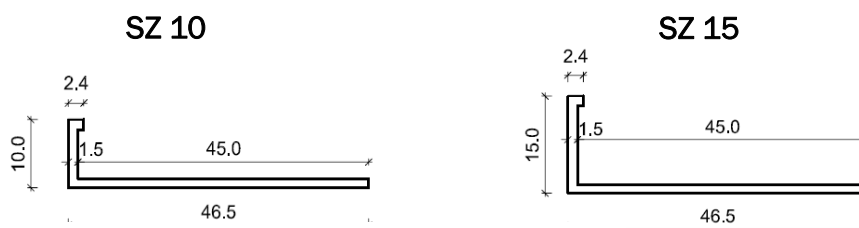
ASSEMBLY:

Concrete substrates, and other substrates that have sufficient rigidity and strength. The substrate must be stable, clean and free of dirt. Along the edge of the edge of the step is made a reduction, the width of the mounted profile (50 mm) and a depth of approx. 1.5 mm.

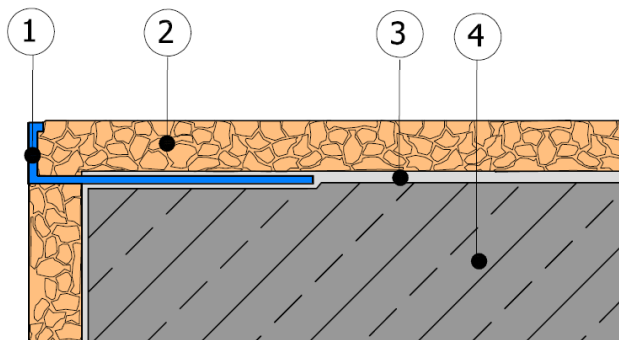
GENERAL RECOMMENDATIONS:

Protect the painted surface of the profiles from damage during installation. Installation of damaged profiles is not permitted. If the profile becomes dirty, its surface can be cleaned with water and a cloth made of a material that will not cause damage to the surface. It is not permissible to leave dirt (sealing mortar or glue) until it hardens on the outer surfaces of the profiles. The manufacturer is not liable for damages caused by improper use of the product, the use of unsuitable auxiliary materials and the use of unsuitable tools. Installation must be carried out in accordance with the project, technical description, relevant standards, building regulations, safety regulations and occupational hygiene.

DIMENSION:



DETAIL:



1. Stair profile SZ10 / SZ15
2. Stone carpet
3. Hydro insulation
4. Stair construction



RODA Renoplast s.r.o.

Těšnovice 15

Kroměříž 767 01

tel. 00 420 737 830 493

info@rodarenoplast.cz

www.rodarenoplast.cz

REMARKS:

This "Technical Data Sheet" supersedes the previous sheet.

The information above applies only to general conditions of use of our products and is not a substitution to technical design. If you intend to use the products under conditions other than those specified in the "Technical Data Sheet," the contractor is obliged to ensure that RODA Renoplast s.r.o. products are appropriate for use in these conditions. When working with RODA Renoplast s.r.o. products, it is recommended to use materials from trusted manufacturers. The responsibility of RODA Renoplast s.r.o. as to the scope and nature of this information may relate only to claims in the case of gross fault (intent or negligence).