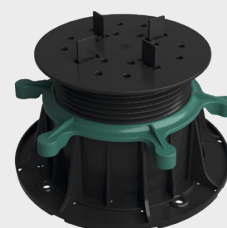


## RECTIFICATION TARGETS

For laying thick-layer porcelain, ceramic, stone, concrete tiles or terrace slabs on beams on the surfaces of balconies, terraces or loggias



### HEIGHT DISTRIBUTION

<b>RODAPAD PRO</b> 13-18 mm	<b>RODAPAD PRO</b> 18-23 mm	<b>RODAPAD PRO</b> 23-29 mm	<b>RODAPAD PRO</b> 29-47 mm	<b>RODAPAD PRO</b> 47-65 mm	<b>RODAPAD PRO</b> 65-119 mm	<b>RODAPAD PRO</b> 119-173 mm	<b>RODAPAD PRO</b> 173-300 mm

### ADDITIONAL ELEMENTS

<b>Leveling insert</b> 0,5 mm	<b>Leveling insert</b> 1 mm	<b>Leveling insert</b> 2 mm	<b>Leveling insert</b> 3 mm	<b>Sound pad</b>	<b>Beam folding</b>	<b>Slope corrector</b> 0,5%	<b>Expander</b> 50 mm	<b>Expander</b> 100 mm

### APPLICATIONS

RODAPAD PRO terrace supports are used to create ventilated floors of terraces and balconies with the option of adjusting the height of the installed floorboards.

### PROPERTIES

- high load capacity
- very stable support for floor slabs
- wide adjustment range from 13 to 300 mm (without expanders)
- system corrector for slopes on the ground
- system expanders increasing by 50 or 100 mm
- resistant to UV radiation and weather effects
- environmentally friendly, made from secondary raw materials, recyclable

### TECHNICAL DATA

<b>Material</b>	polypropylene (secondary raw material)
<b>Width of the created gap</b>	2 mm
<b>Height</b>	13-18 mm, 18-23 mm, 23-29 mm, 29-47 mm, 47-65 mm, 65-119 mm, 119-173 mm, 173-300 mm
<b>Color</b>	black (base and helix), green (nut)

### BASE

Cement or other base with adequate bearing capacity.

### TOOLS

Meter ruler, knife, spirit level, tile suction cup.

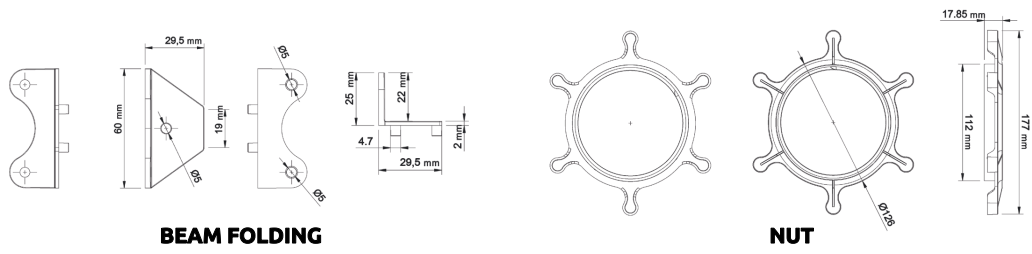
### INSTALLATION RECOMMENDATIONS

Before starting installation work, please read the technical documentation or other instructions, e.g. regarding the installation of floorboards, with particular emphasis on recommended support points for floorboards.

### OPERATIONAL RECOMMENDATIONS

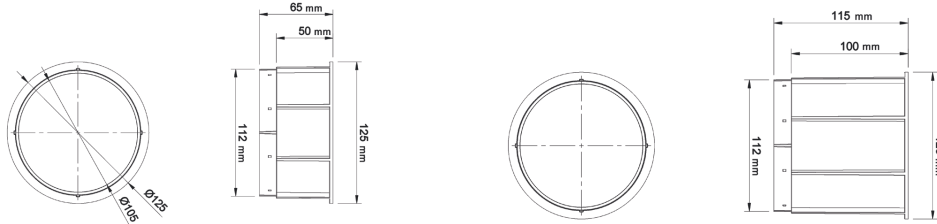
Držáky RODRODAPAD PRO holders are designed for laying floor boards on balconies, terraces or other surfaces with a load of up to 3.5 kN/m<sup>2</sup>.

# DIMENSIONS



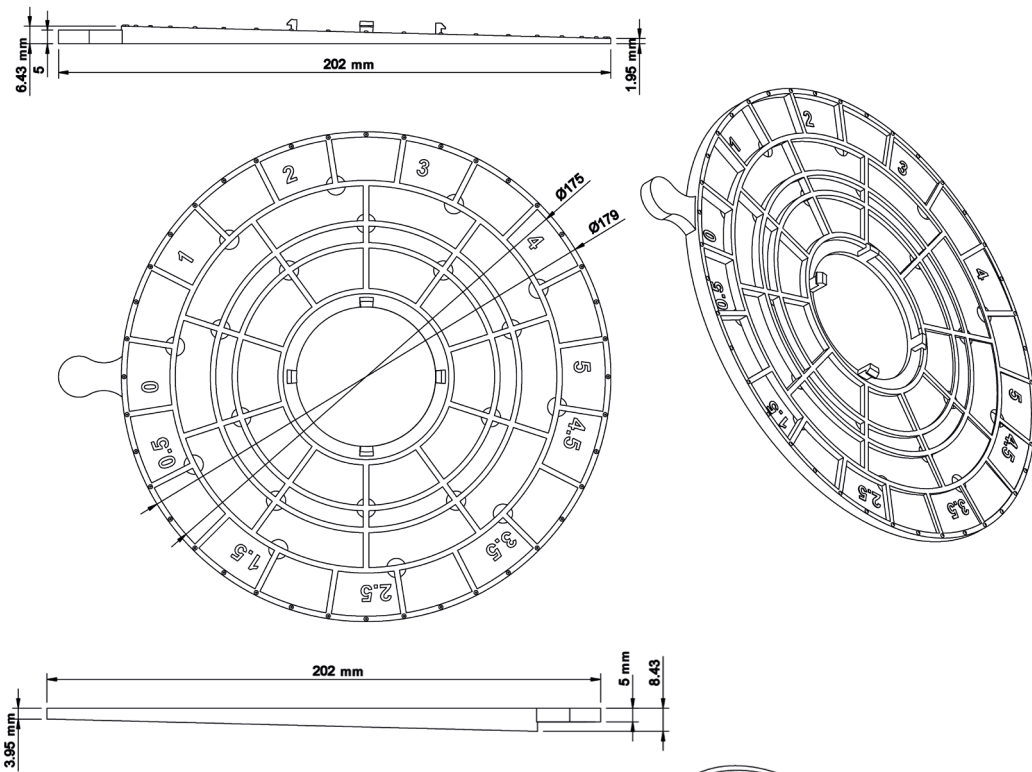
**BEAM FOLDING**

**NUT**

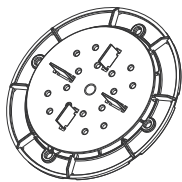


**EXPANDER 50**

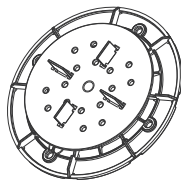
**EXPANDER 100**



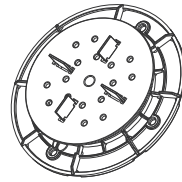
**TILT CORRECTOR**



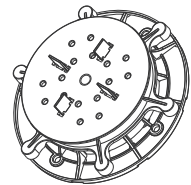
**RODAPAD  
PRO**  
13-18 mm



**RODAPAD  
PRO**  
18-23 mm

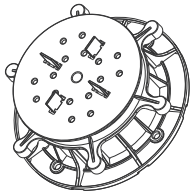


**RODAPAD  
PRO**  
23-29 mm

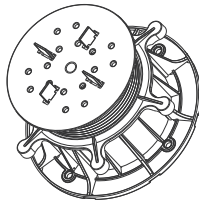


**RODAPAD  
PRO**  
29-47 mm

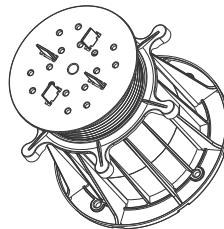
**DIMENSIONS**



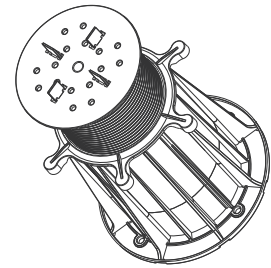
**RODAPAD  
PRO**  
47-65 mm



**RODAPAD  
PRO**  
65-119 mm

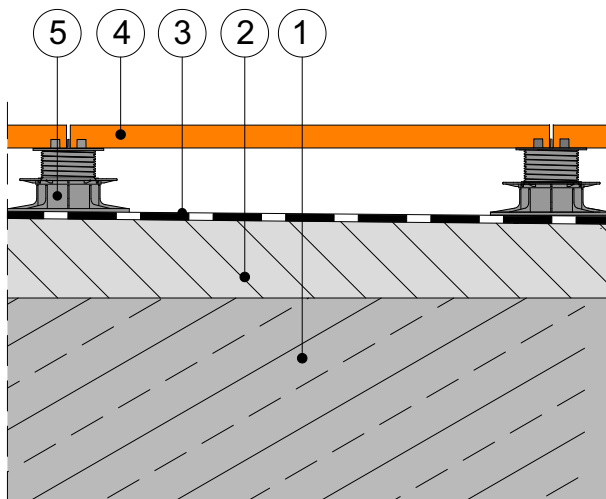


**RODAPAD  
PRO**  
119-173 mm

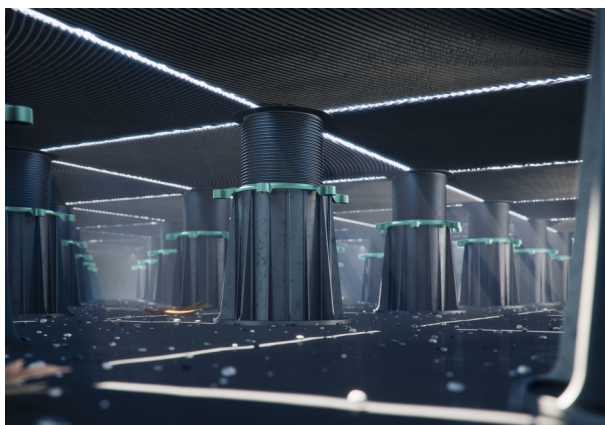


**RODAPAD  
PRO**  
173-300 mm

**EXAMPLE  
APPLICATION**



- ① Supporting base
- ② Slope layer
- ③ Hydro isolation
- ④ Paving
- ⑤ Target RODAPAD PRO



**REMARKS:**

This "Technical Data Sheet" supersedes the previous sheet.

The information above applies only to general conditions of use of our products and is not a substitution to technical design. If you intend to use the products under conditions other than those specified in the "Technical Data Sheet," the contractor is obliged to ensure that RODA Renoplast s.r.o. products are appropriate for use in these conditions. When working with RODA Renoplast s.r.o. products, it is recommended to use materials from trusted manufacturers. The responsibility of RODA Renoplast s.r.o. as to the scope and nature of this information may relate only to claims in the case of gross fault (intent or negligence).