

R60

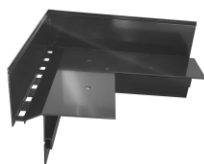
RODA Renoplast

EAVES PROFILE

WITH THICK QUARRY, CONCRETE OR CERAMIC TILES FLOORS ON CRUSHED-STONE AGGREGATE GROUND FOR RESIN, MINERAL AND BITUMINOUS ROLLER AND COATING WATERPROOFING



COMPLEMENTARY PRODUCTS



OC 60/90



IC 60/90



C 60



WB 60
wall bumper



SMART
terasová podložka

APPLICATIONS:

R60 eaves profile for terraces edging over heated rooms with quarry, concrete or ceramic tiles floors. It is made of aluminium covered with a polyester coating. It is used in resin and mineral insulation systems and in bituminous roller and coating paper systems. The structure of the profile ensures tight connection with bituminous paper. Thanks to drainage layer formed through the use of DM60 mat and drainage holes in the profile it is possible to drain water from under the floor. The structure of the profile allows for system downpipe mounting.

PROPERTIES:

- effective water drainage from the floor
- corrosion and weather resistance
- tightness in eaves areas
- comprehensive solution ensuring a simple and quick assembly
- aesthetic appearance
- system downpipe mounting

TECHNICAL DATA:

BASE	aluminium covered with polyester
Weight	1580 g/m
Polyester layer thickness	ca. 70 µm
Colour	RAL 7037, 8019, 7024

BASE TYPE:

Cement subfloors, other subfloors with appropriate rigidity and carrying capacity.

BASE PREPARATION:

The base must have an appropriate carrying capacity; it must also be even and clean. Cement subfloors should be set, seasoned, free from cracks with appropriate settlement joints. Along the balcony edge, within the width of the mounted profile (80 mm), the base should have an offset (ca. 3 mm down) so that once the profile is mounted, its surface faces the surface of the subfloor.

The offset may be made with the use of an ABS mounting template (available with profiles):

1. In the case of a new cement subfloor - by setting the mounting template in mortar at the time of its setting.
2. In the case of a set cement subfloor - by placing the mounting template on it and aligning the subfloor to the upper surface with a levelling mortar.

TOOLS:

Pocket rule or pocket tape, saw for cutting aluminium, knife, mixer or low-speed electric drill, basket mixer, stainless steel trowel, brush, paintbrush, putty knife or trowel, scaled container. The use of hand saws and chainsaws for cutting aluminium is allowed. It is not allowed to use tools, such as angle grinders, which cause thermal effect (rapid temperature increase) for cutting profiles.

CONSTRUCTION REQUIREMENTS:

Profiles must be mounted under conditions suitable for the use of insulation and assembly materials (cementitious mortar, mechanical or chemical connectors, other materials), according to the data sheets of these materials. The smoothed surface should be protected against over-drying and damping.

ASSEMBLY:

Start the work from placing the first layer of heat-sealed base paper. Next, mount the corners. Once they are preset, mark the mechanical mounting spots, drill openings, fill them in with bituminous mix, fix rawplugs tubes, fix vertical settlement connections, and then fix the corners with steel screws. Then measure the sections of straight profiles. Measure the profiles in such a way, that leaves ca. 2 mm settlement joints. Mount the straight profiles similarly to corners - properly and evenly. Fix horizontal settlement connections below the profiles and C60 connections on the exterior at the height of settlement connections (profile and corner connections). Fill in the expansion gap, along the entire length, with elastic mastic (for outdoor use, e.g. polyurethane). Next, lay the second layer of paper. Cut the paper along the profiles, so that it does not cover drainage holes, and then weld to the profiles. Fix PVC (the tape is provided in the packaging with profiles) tape in the gap (situated in the profile over drainage holes) on any elastic mix. If the next layer is made of drainage mortar put a perforated PVC profile in the gap (provided in the packaging with the R60 profiles). Place the T60 mat, suitable for the R60 profile, according to their technical data sheets. Once the works are finished, immediately remove the masking tape from the external surface of the profiles.

Remarks to downpipe hook mounting:

Downpipe hooks are suitable for Gamrat and Marley 75 mm wide downpipes. Once the downpipe is selected, adapt the hook in accordance with the information attached to the downpipe hook packaging.

Remarks to floors in drainage system with the use of the T60 mat:

Place thick quarry, concrete or ceramic tiles on the butt on crushed-stone aggregate with 2-8 mm fraction (low absorbability aggregate, e.g. basalt). The floor should have a 1.5-2% slope (directly on the construction panel).

Construction of the profile is shown in the figure, which shows its applications.

GENERAL RECOMMENDATIONS - ASSEMBLY:

When carrying out the work, protect the profiles paintwork against damage. It is not allowed to mount damaged profiles. If dirty, the profiles should be immediately cleaned with water and non-abrasive cloth. Do not allow the dirt (e.g. cementitious mortar or adhesives) to harden on the outer surface of the profiles. The manufacturer is not liable for damages resulting from improper use of the product, use of inappropriate auxiliary materials and use of wrong tools. The work should be carried out in accordance with the design, technical data sheet, relevant standards, rules of the trade and safety regulations.

GENERAL RECOMMENDATIONS - USE:

Clean the profiles at least twice a year. Clean with clear water and non-abrasive cloth. Do not use strong acid or alkaline cleaners and surfactants which may react with aluminium. Do not use organic solvents with esters, ketones, aromatic compounds, glycol esters, chlorinated hydrocarbons, etc. After each cleaning the surface must be immediately rinsed with clear cold water. Do not use salt and chemicals for defrosting near the profiles. It is recommended to carry out technical inspection of balconies and terraces twice a year in order to check the technical condition of individual elements. Any defects should be removed as soon as possible.

R60

RODA Renoplast



EAVES PROFILE

WITH THICK QUARRY, CONCRETE OR CERAMIC TILES FLOORS ON CRUSHED-STONE AGGREGATE GROUND FOR RESIN, MINERAL AND BITUMINOUS ROLLER AND COATING WATERPROOFING

TRANSPORT AND STORAGE:

Profiles should be transported in covered, dry and clean means of transport, in original cardboard packaging and protected against mechanical damage. Store in dry and clean rooms, where no active chemical vapours and gases are present.

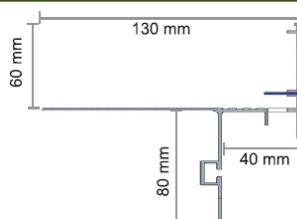
PACKAGING:

R60 profile:	2 m, in cardboard packaging.
Corners:	1 pc in cardboard packaging.
CR60 connector:	1 pcs in cardboard packaging.
DM60 drainage mat:	1 roll (25 m)
Downpipe hooks:	1 pcs (MG75 hook holders + 2 screws)
ABS mounting template:	2 m long.

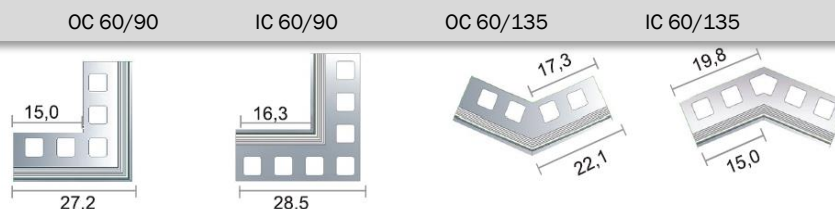
Additionally, the packaging includes:

Rawplugs:	4 pcs for 1 profile, 2 pcs for 1 corner.
Horizontal settlement connections:	2 pcs for 1 profile, 2 pcs for 1 corner
Vertical settlement connections:	2 pcs for 1 profile, 2 pcs for 1 corner

PROFILE SHAPE:

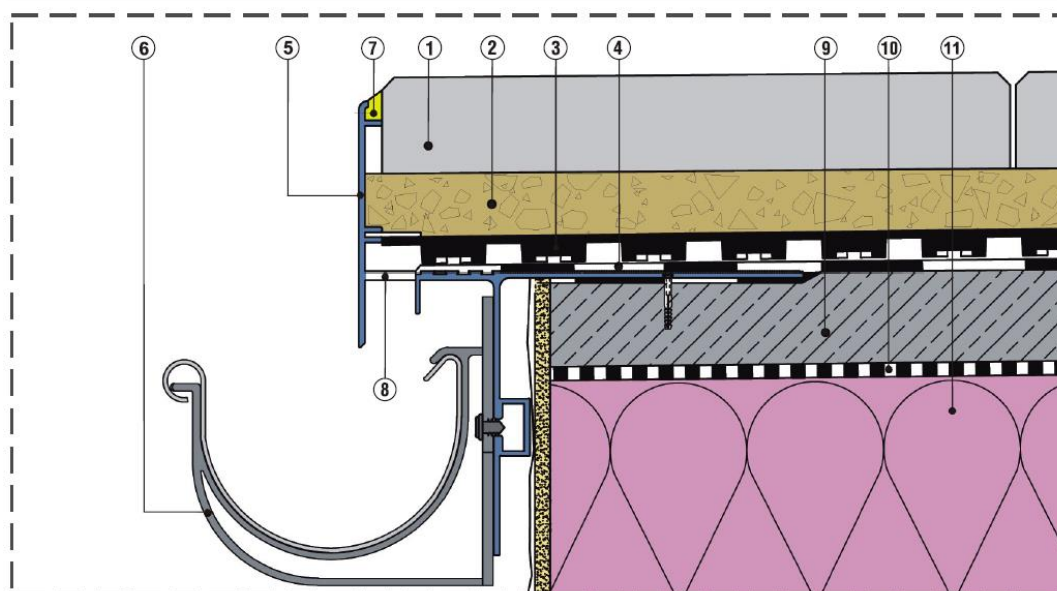


CORNERS:



APPLICATIONS OF EAVES PROFILE:

EAVES DETAIL



1. Thick quarry, concrete or ceramic tiles
2. Crushed-stone aggregate with 2-8 mm fraction
3. **T60** drainage mat
4. Geotextile
5. Hydroinsulation - heat-weldable roofing paper
6. **R60** eaves profile
7. Drain hole
8. MG75 downpipe hook

9. Elastic sealing compound
10. Cement subfloor (reinforced)
11. PE film

RODA Renoplast

RODA Renoplast s.r.o.
Těšnovice 15
Kroměříž 767 01
tel. 00 420 737 830 493
info@rodarenoplast.cz
www.rodarenoplast.cz

REMARKS:

This "Technical Data Sheet" supersedes the previous sheet.

The information above applies only to general conditions of use of our products and is not a substitution to technical design. If you intend to use the products under conditions other than those specified in the "Technical Data Sheet," the contractor is obliged to ensure that RODA Renoplast s.r.o. products are appropriate for use in these conditions. When working with RODA Renoplast s.r.o. products, it is recommended to use materials from trusted manufacturers. The responsibility of RODA Renoplast s.r.o. as to the scope and nature of this information may relate only to claims in the case of gross fault (intent or negligence).