

R35

EAVES PROFILE

FOR BALCONIES AND TERRACES MADE OF CERAMIC TILES
AND PAVERS



RELATED PRODUCTS:



OC35/90
outside 90°



IRC35/90
Inside 90°



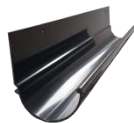
R35S
side profile



C35
connector



WB35
wall bumper



GR50
gutter



tape **CLEVER**



R35 band

APPLICATION:

The R35 profile is made of high quality aluminum coated polyester, providing perfect resistance to corrosion and weathering. It is designed to complete the edges of terraces, balconies and staircases with ceramic tiles. The shape of the profile allows sealing with insulation and ceramic floor. Holes located along the profile, remove moisture from the floor. The R35 profile allows the installation of the GR50 Gutter system.

PROPERTIES:

- effective water drainage from the floor
- corrosion and weather resistance
- tightness in eaves areas
- comprehensive solution ensuring a simple and quick assembly
- aesthetic appearance
- system downpipe mounting

TECHNICAL DATA:

BASE	Aluminium covered with polyester
WEIGHT	690 g/m
PAINT THICKNESS	70 µm
COLOR	RAL 7037, RAL 7024, RAL 8019

FLOOR TYPE:

Cement subfloors, other substrates having sufficient stiffness and firmness.

TOOLS:

Folding or tape measure, mechanical or hand saw suitable for cutting aluminum, knife, mixer or low-speed electric drill, basket mixer, leveling spoon stainless steel brush, spatula or trowel. It is not acceptable that the tool profile caused thermal shock (sudden increase in temperature), e.g. an angle grinder.

CONSTRUCTION REQUIREMENTS:

Mounting of the profiles is performed under conditions suitable for insulation and assembly materials (sealing mortar, mechanical, chemical coupling, or other materials), depending on the technical data sheets of these materials.

ASSEMBLY:

Work begins with installing the corners. Mark the positions for mechanical fastening, drilling dowel holes and then fit the corners. We measure straight sections of profiles. thus, an expansion joint with a width of approximately 2 mm. Mark the places of mechanical fastening of straight profiles, drill holes and insert dowels. On the surface of the pre-made drop, place a thin layer of sealing mortar along the balcony edge. Place the corner and straight profiles on it, taking care to place them properly and evenly. Partially screw the screws into the dowels and only tighten the screws after the sealing mortar has hardened. Attach horizontal expansion joints and C35 connectors on the outside at the bottom of the profiles, at the level of the expansion gaps (joints of profiles and corner profiles). The sealing mortar is applied directly to the plane of the profile in its insertion of CLEVER tape and to ensure that no air bubbles remain. Other activities related to the insulation performance are performed according to the manufacturer's data. On a waterproofing layer of ceramic tiles laid on a suitable adhesive mortar. Leave a gap of 6 mm between the tile and the top edge of the profile. In which you insert the expansion cord and then fill it with elastic sealant.



RODA Renoplast s.r.o.
Těšnovice 15
Kroměříž 767 01
tel. 00 420 737 830 493
info@rodarenoplast.cz
www.rodarenoplast.cz

R35

EAVES PROFILE

FOR BALCONIES AND TERRACES MADE OF CERAMIC TILES
AND PAVERS



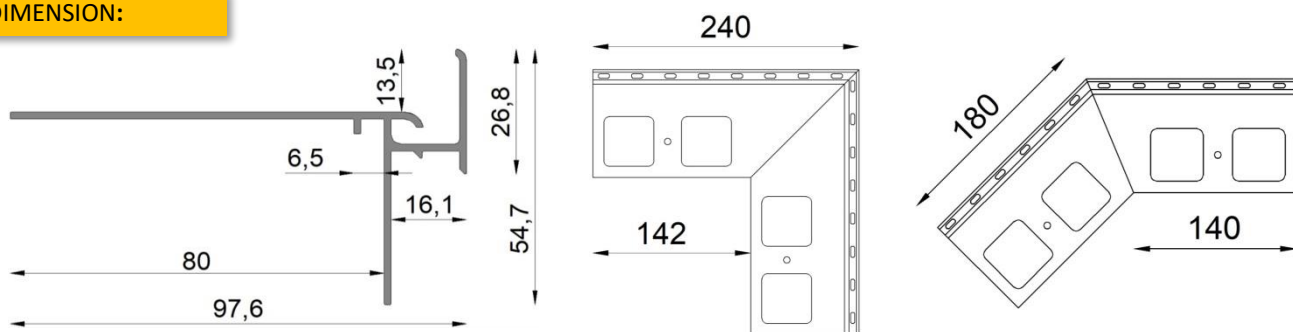
GENERAL RECOMMENDATIONS-ASSEMBLY:

When carrying out the work, protect the profiles paintwork against damage. It is not allowed to mount damaged profiles. If dirty, the profiles should be immediately cleaned with water and non-abrasive cloth. Do not allow the dirt (e.g. cementitious mortar or adhesives) to harden on the outer surface of the profiles. The manufacturer is not liable for damages resulting from improper use of the product, use of inappropriate auxiliary materials and use of wrong tools. The work should be carried out in accordance with the design, technical data sheet, relevant standards, rules of the trade and safety regulations.

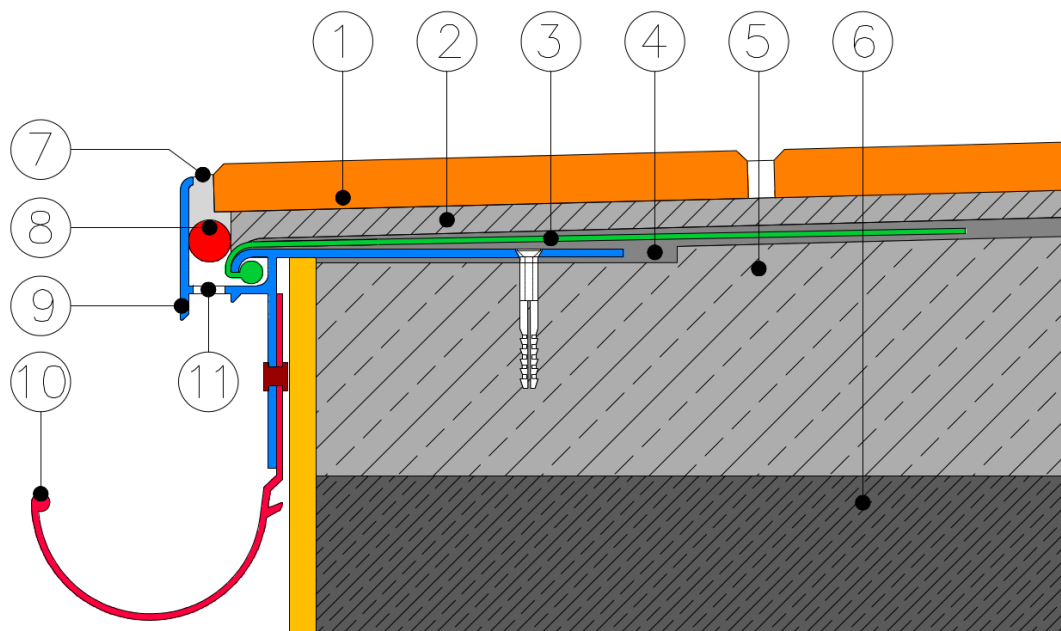
GENERAL RECOMMENDATION – USE:

Cleaning profiles should be done at least twice a year. For washing it is best to use clean water and cloth, non-abrasive surface. Do not use a strongly acidic or strongly alkaline detergents and surfactants that can react with aluminum. No organic solvent containing esters, ketones, alcohols, aromatic hydrocarbons, glycol ethers, chlorinated hydrocarbons and the like. After each washing, the surface should immediately rinse in cold water. Do not use chemical deicing salt and close profiles. It is recommended to do twice a year, technical inspections of balconies and terraces, to verify the technical elements. In the case of detection of defects, they should be removed as soon as possible.

DIMENSION:



DETAIL R35:



- | | |
|-----------------------------------|-------------------------------|
| 1. Ceramic tiles, frost-resistant | 7. Elastic seal |
| 2. Adhesive | 8. Expansion cord (6mm) |
| 3. Band CLEVER | 9. Profile R35 |
| 4. Waterproof insulating material | 10. Gutter system GR50 |
| 5. Concrete base | 11. Moisture outlets |
| 6. Balcony construction | |

REMARKS:

This "Technical Data Sheet" supersedes the previous sheet.

The information above applies only to general conditions of use of our products and is not a substitution to technical design. If you intend to use the products under conditions other than those specified in the "Technical Data Sheet," the contractor is obliged to ensure that RODA Renoplast s.r.o. products are appropriate for use in these conditions. When working with RODA Renoplast s.r.o. products, it is recommended to use materials from trusted manufacturers. The responsibility of RODA Renoplast s.r.o. as to the scope and nature of this information may relate only to claims in the case of gross fault (intent or negligence).

RODA
renoplast

RODA Renoplast s.r.o.

Těšnovice 15

Kroměříž 767 01

tel. 00 420 737 830 493

info@rodarenoplast.cz

www.rodarenoplast.cz