

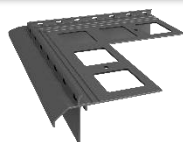
# R20G

## EAVES PROFILE

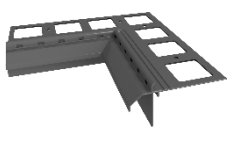
FOR TERRACES AND BALCONIES  
WITH RESIN FLOOR



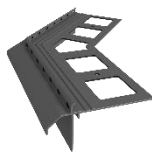
### COMPLEMENTARY PRODUCTS:



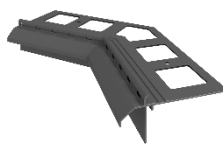
**OC 20G/90**  
outside 90°



**IC 20G/90**  
inside 90°



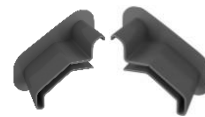
**OC 20G/135**  
outside 135°



**IC 20G/135**  
inside 135°



**C 20**  
connector



**WB 20**  
wall bumper

### APPLICATIONS:

The R20G gutter profile is made of high-quality aluminum alloy covered with a polyester coating, which ensures complete resistance to corrosion and weathering. It is designed for finishing the edges of terraces and balconies with resin floors. The gutter strip integrated with the R20G profile allows the installation of the GR50 gutter system.

### PROPERTIES:

- effective water drainage from the floor
- corrosion and weather resistance
- shape optimized for stone carpet floors
- tightness in eaves areas
- comprehensive solution ensuring a simple and quick assembly
- aesthetic appearance
- possibility to install gutter system GR50

### TECHNICAL DATA:

BASE	aluminum alloy with a conversion layer coated with a polyester coating
WEIGHT	850 g/m
THICKNESS	min. 60 µm

### COLOUR:

BASE COLOR:

RAL 8019

RAL 7037

RAL 7024

The color presented is illustrative. Other colors from the RAL palette are available on request.

### BASE TYPE:

Cement or concrete screeds, other substrates with sufficient rigidity and load-bearing capacity.

### BASE PREPARATION:

The base must have an appropriate carrying capacity; it must also be even and clean. Cement subfloors should be set, seasoned with appropriate settlement joints. Along the balcony edge, within the width of the mounted profile (80 mm), the base should have an offset (ca. 3 mm down) so that once the profile is mounted, its surface faces the surface of the subfloor.

The offset may be made with the use of an ABS mounting template (available with profiles):

1. In the case of a new cement subfloor - by setting the mounting template in mortar.
2. In the case of a set cement subfloor - by placing the mounting template on it and aligning the subfloor to the upper surface with a levelling mortar.

### TOOLS:

Pocket rule or pocket tape, saw for cutting aluminium, knife, mixer or low-speed electric drill, basket mixer, stainless steel trowel, brush, paintbrush, putty knife or trowel, scaled container. The use of hand saws and chainsaws for cutting aluminium is allowed. It is not allowed to use tools, such as angle grinders, which cause thermal effect (rapid temperature increase) for cutting profiles.

### CONSTRUCTION REQUIREMENTS:

Profiles must be mounted under conditions suitable for the use of insulation and assembly materials (cementitious mortar, mechanical or chemical connectors, other materials), according to the data sheets of these materials. The smoothed surface should be protected against over drying and damping.

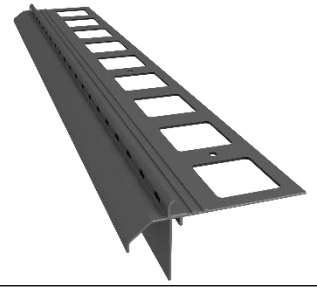
### ASSEMBLY:

Let's start with the assembly of the corners. After their initial adjustment, mark the places of mechanical fastening, drill holes, clean the surfaces, insert the dowels of the expansion bolts. We measure straight profiles so that the expansion joints remain about 2 mm and the installation of the WB 20/100 curb on the walls. If required by the manufacturer, paint the surface to be applied with the resin. Then place a thin layer of resin on the surface of the previously performed step in the base and start the correct assembly of the profiles and ensure their even position. All profiles are pre-screwed to the base. Install the C 20/100 connectors. The expansion joint is filled with an elastic sealant along its entire length (according to the resin manufacturer's recommendations). Then apply the resin to the entire surface, if necessary, before inserting tapes or reinforcing fleece. To meet the requirements for non-slip surfaces, it may be required to perform sanding or decorative lining with flakes and a topcoat. All activities not related to the installation of profiles should be performed in accordance with the resin system manufacturer's instructions. The gutter system should be installed in accordance with the recommendations of the GR50 gutter technical data sheet.

# R20G

## EAVES PROFILE

FOR TERRACES AND BALCONIES  
WITH RESIN FLOOR



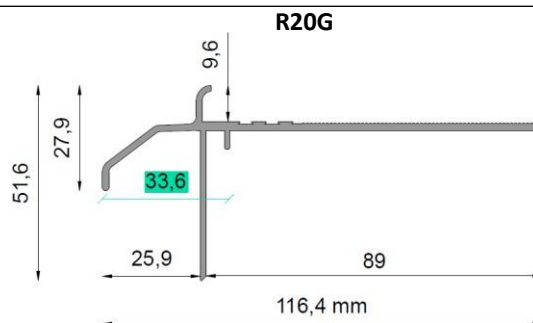
### GENERAL RECOMMENDATIONS - ASSEMBLY:

When carrying out the work, protect the profiles paintwork against damage. It is not allowed to mount damaged profiles. If dirty, the profiles should be immediately cleaned with water and non-abrasive cloth. Do not allow the dirt (e.g. cementitious mortar or adhesives) to harden on the outer surface of the profiles. The manufacturer is not liable for damages resulting from improper use of the product, use of inappropriate auxiliary materials and use of wrong tools. The work should be carried out in accordance with the design, technical data sheet, relevant standards, rules of the trade and safety regulations.

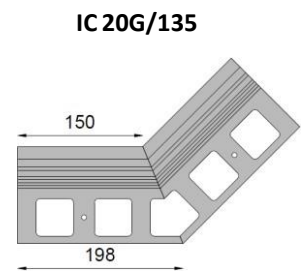
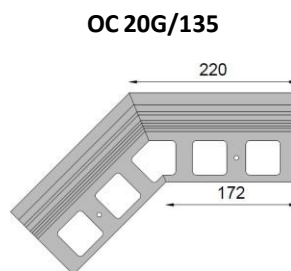
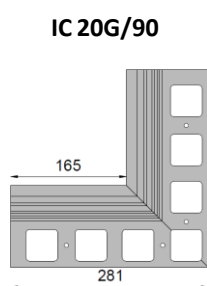
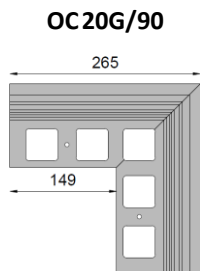
### GENERAL RECOMMENDATIONS - USE:

Clean the profiles at least twice a year. Clean with clear water and non-abrasive cloth. Do not use strong acid or alkaline cleaners and surfactants which may react with aluminium. Do not use organic solvents with esters, ketones, aromatic compounds, glycol esters, chlorinated hydrocarbons, etc. After each cleaning the surface must be immediately rinsed with clear cold water. Do not use salt and chemicals for defrosting near the profiles. It is recommended to carry out technical inspection of balconies and terraces twice a year in order to check the technical condition of individual elements. Any defects should be removed as soon as possible.

### DIMENSIONS:

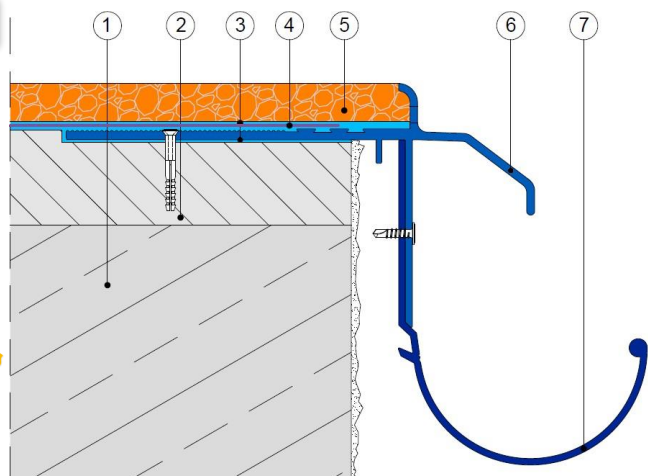


The minimum distance for which the R20G profile (without gutter) exceeds the edge of the balcony / terrace is: 31.3 mm or approximately 60 mm with the GR50 gutter installed



External and internal corners of any angle are available on request. Angles on site should be measured on a previously prepared foundation using a construction protractor with an accuracy of  $\leq 1^\circ$ .

### EAVES DETAIL:



1. Support plate
2. Substrate angle 1,5-2,0%
3. Waterproofing system
4. Reinforcing fabric tape
5. Resin – stone carpet
6. Profile **R20G**
7. Gutter **GR50**

**RODA**  
**Renoplast**  
RODA Renoplast s.r.o.  
Těšnovice 15  
Kroměříž 767 01  
tel. 00 420 737 830 493  
[info@rodarenoplast.cz](mailto:info@rodarenoplast.cz)  
[www.rodarenoplast.cz](http://www.rodarenoplast.cz)

#### REMARKS:

This "Technical Data Sheet" supersedes the previous sheet.

The information above applies only to general conditions of use of our products and is not a substitution to technical design. If you intend to use the products under conditions other than those specified in the "Technical Data Sheet," the contractor is obliged to ensure that RODA Renoplast s.r.o. products are appropriate for use in these conditions. When working with RODA Renoplast s.r.o. products, it is recommended to use materials from trusted manufacturers. The responsibility of RODA Renoplast s.r.o. as to the scope and nature of this information may relate only to claims in the case of gross fault (intent or negligence).