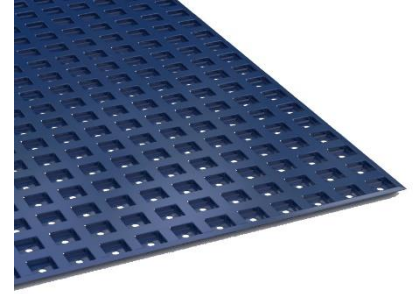


T60

RODA
Renoplast



DRAINAGE MAT

FOR BALCONIES AND TERRACES
WITH CERAMIC PAVING

APPLICATION:

The T60 drainage layer is designed for use with the profile of the T60 system on terraces of stone, concrete and ceramic tiles on a substrate of crushed aggregate. This allows ventilation, equalization of steam pressure, removal of moisture and water from under the floor. Prevents thermal damage.

PROPERTIES:

- stress relief in the floor terrace
- moisture absorption
- ventilation of the layer under the floor

TECHNICAL DATA:

BASE	PVC membrane
WEIGHT	630 g/m ²
THICKNESS	6,5mm

SURFACE TYPE:

Putties, resins, tar, self-adhesive membrane, PVC membrane.

TOOLS:

Folding or tape measure, aluminum saw, knife, mixer or slow speed electric drill, basket stirrer, brush, paintbrush, trowel or spoon. The use of a manual or mechanical saw designed for cutting aluminum is permissible. It is not permitted to use tools that cause thermal phenomena (sharp temperature rise) to cut profiles, eg angle grinders.

INSTALLATION CONDITIONS:

Assembly work carried out under conditions suitable for the creation of insulating materials such as waterproofing mortars for sealing, mechanical couplings or chemical other materials, depending on the sheets of these materials.

ASSEMBLY:

Before laying the mat, we accurately measure and cut with a knife or scissors to the dimensions of the floor. After stretching from the roller, the mat stabilizes in the plane adjacent to the substrate. The pad should be brought into contact with the sidewall with the eyes upside down, provided that the net protrudes onto the adjacent pad. Pull the transverse joints of the mat a width of at least 15 cm.

TRANSPORT AND STORAGE:

Transport of rolling mats in covered, dry and clean vehicles, in the original cardboard packaging, in a horizontal position, protecting against mechanical damage. Store in a dry, clean place and free of chemically active vapors and gases. Protect from sunlight. The rollers should be in an upright position.

GENERAL RECOMMENDATIONS:

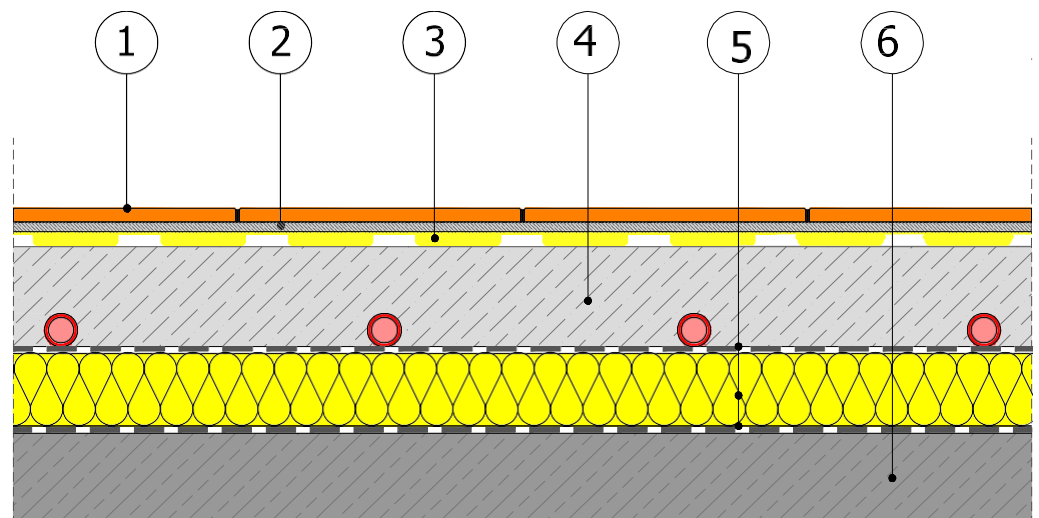
The T60 drainage mat should be installed within two weeks of disassembly. The manufacturer is not liable for damages caused by indirect or unprofessional use of the product. Carry out the work in accordance with the rules of the construction process, the manufacturer's instructions, health and safety standards.

PACKAGING:

Roll 1 m wide and 25 bm long.

EXAMPLE OF T60 DRAINAGE MAT APPLICATION

- 1) Ceramic tiles
- 2) Adhesive mortar
- 3) **Drainage mat T60**
- 4) Concrete screed with floor heating coils
- 5) Insulation layers underfloor heating
- 6) Ceiling construction



RODA Renoplast s.r.o.
Těšnovice 15
Kroměříž 767 01
tel. 00 420 737 830 493
info@rodarenoplast.cz
www.rodarenoplast.cz

REMARKS:

This "Technical Data Sheet" supersedes the previous sheet.

The information above applies only to general conditions of use of our products and is not a substitution to technical design. If you intend to use the products under conditions other than those specified in the "Technical Data Sheet," the contractor is obliged to ensure that RODA Renoplast s.r.o. products are appropriate for use in these conditions. When working with RODA Renoplast s.r.o. products, it is recommended to use materials from trusted manufacturers. The responsibility of RODA Renoplast s.r.o. as to the scope and nature of this information may relate only to claims in the case of gross fault (intent or negligence).